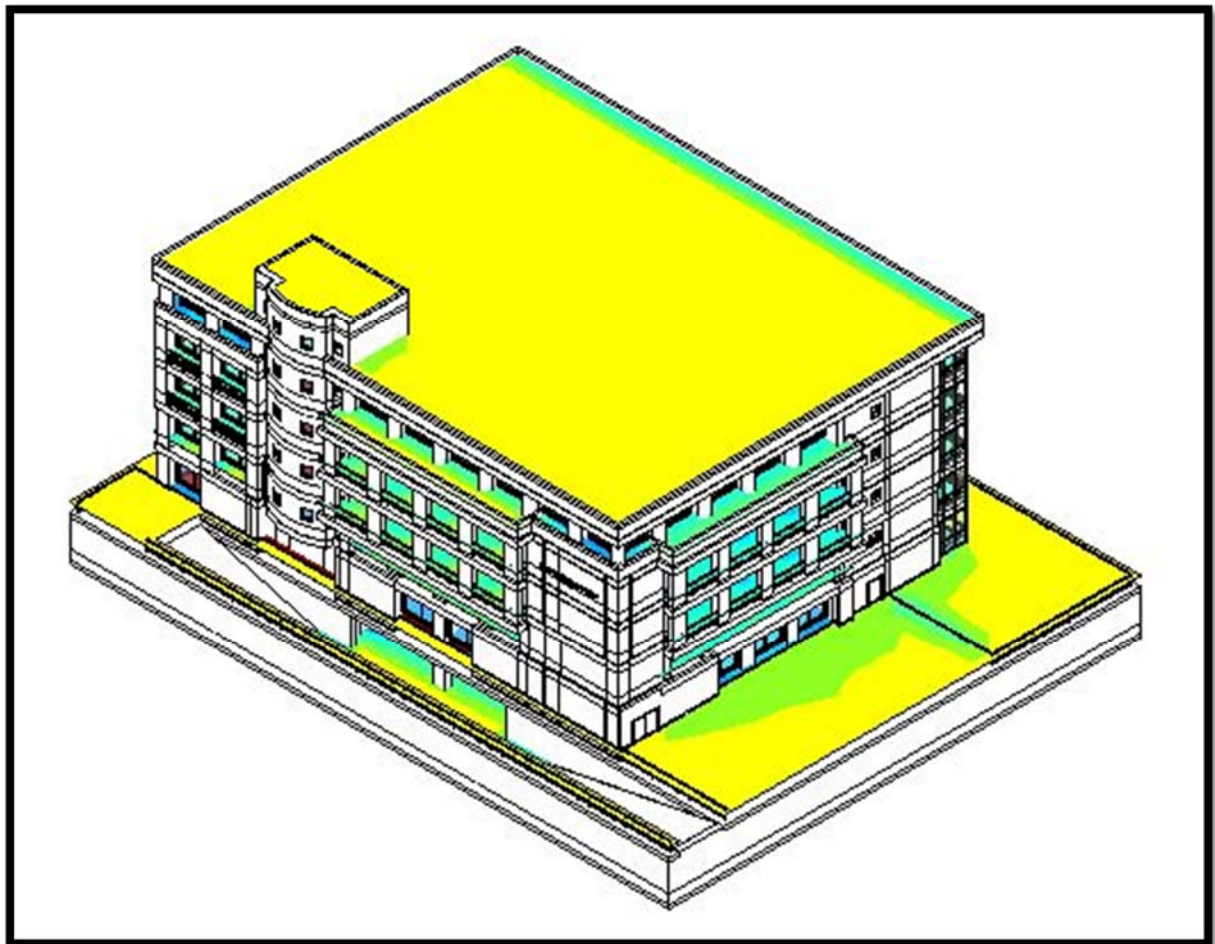


#### 4.3.4.3 Natural lighting analyses for building GS

The analyses result of building GS natural lighting analyses is shown in **Figures 4-29 to 4-38** and **Table 4-3**



**Figure (4-29)** 3D lighting analyses

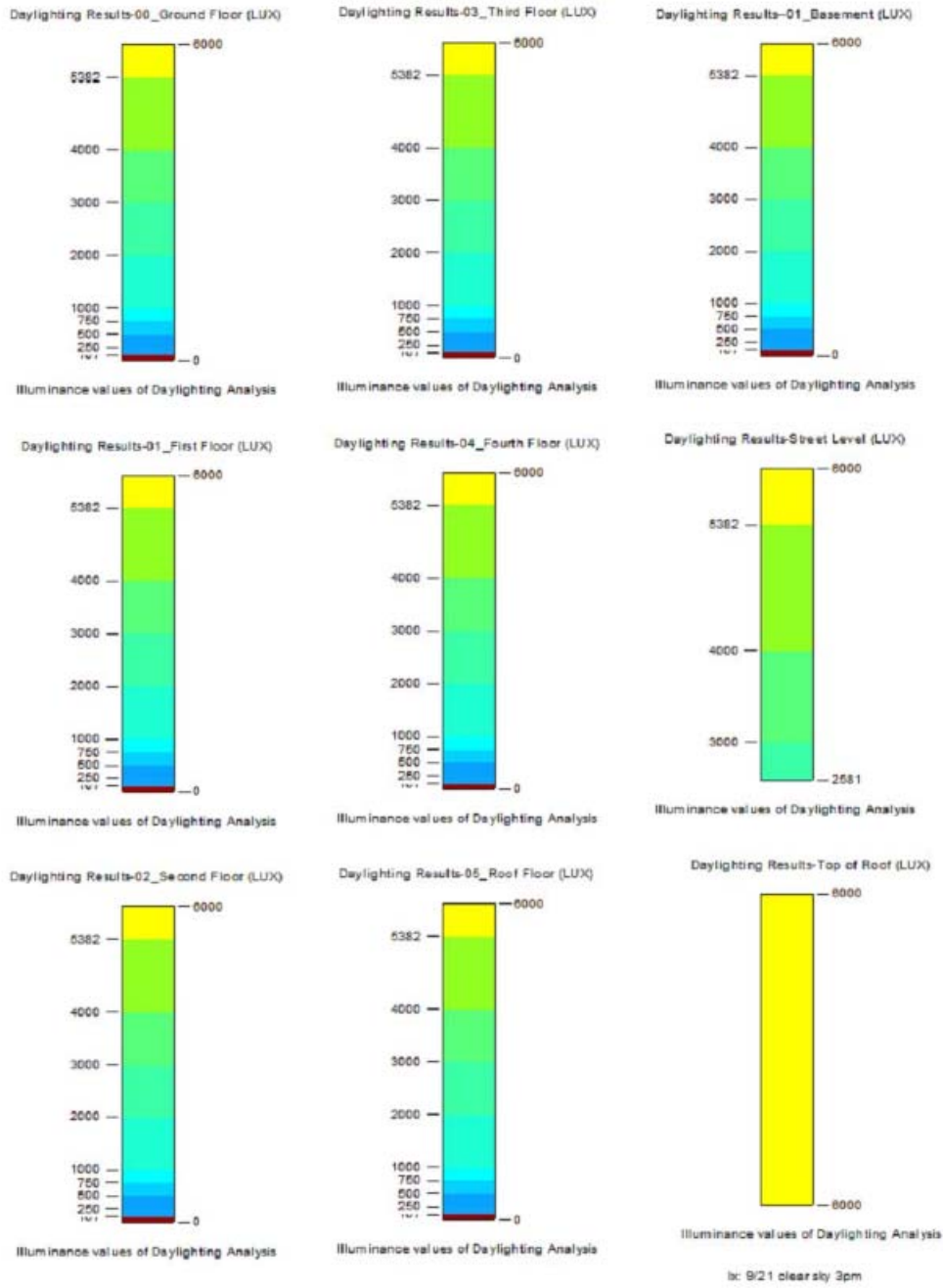


Figure (4-30) lighting analyses scales

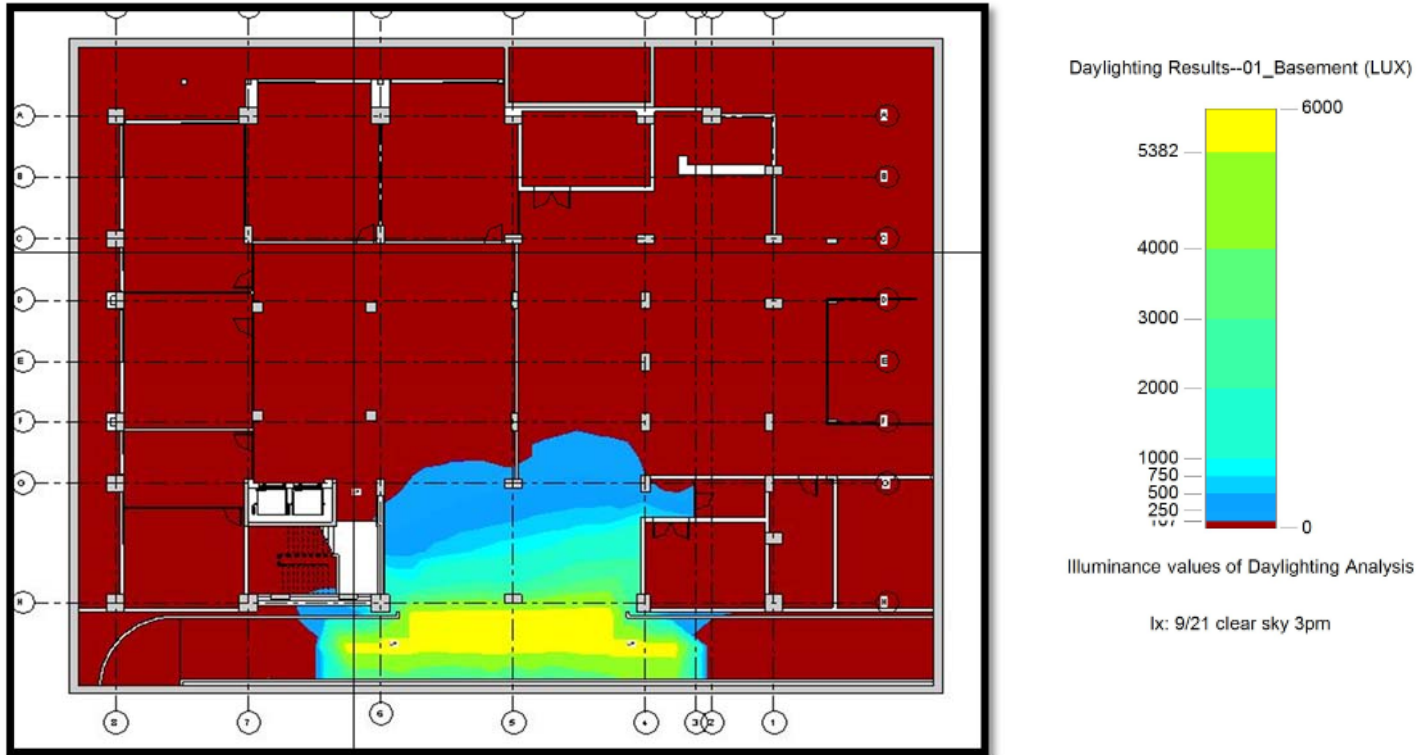


Figure (4-31) basement light analyses

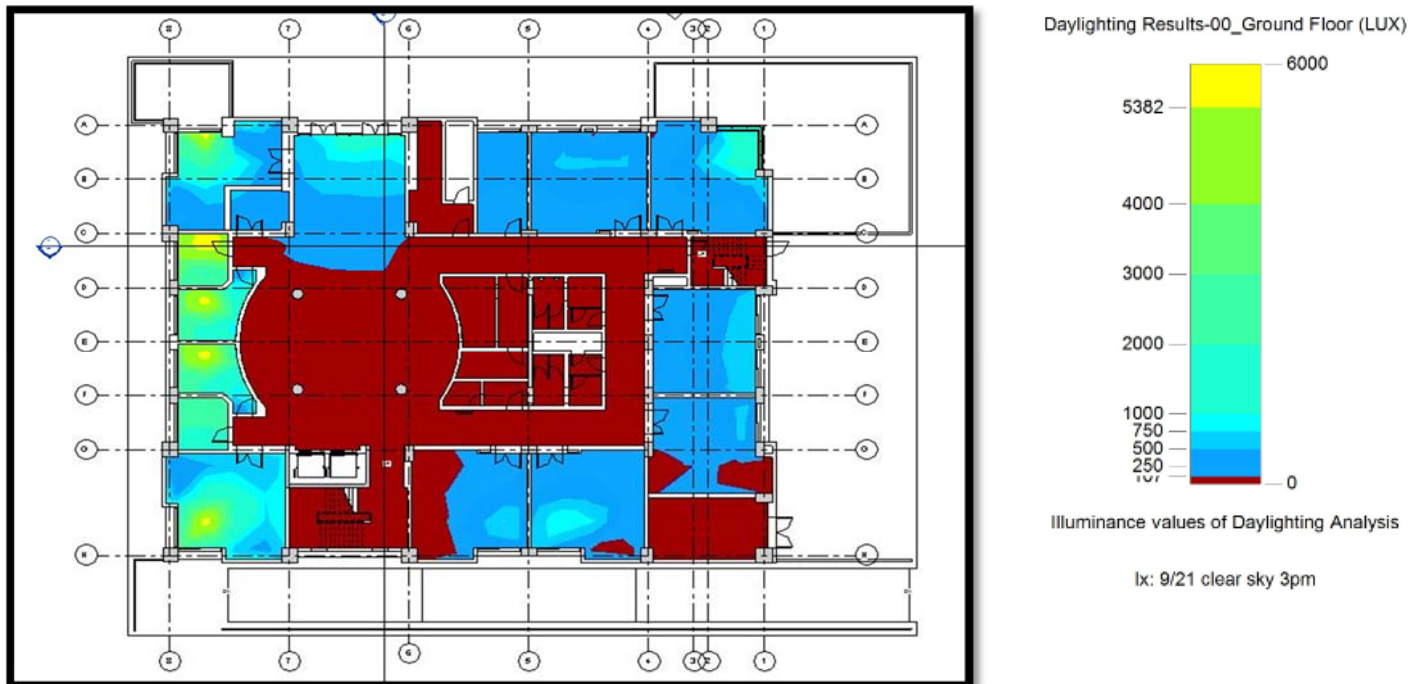


Figure (4-32) ground floor lighting analyses

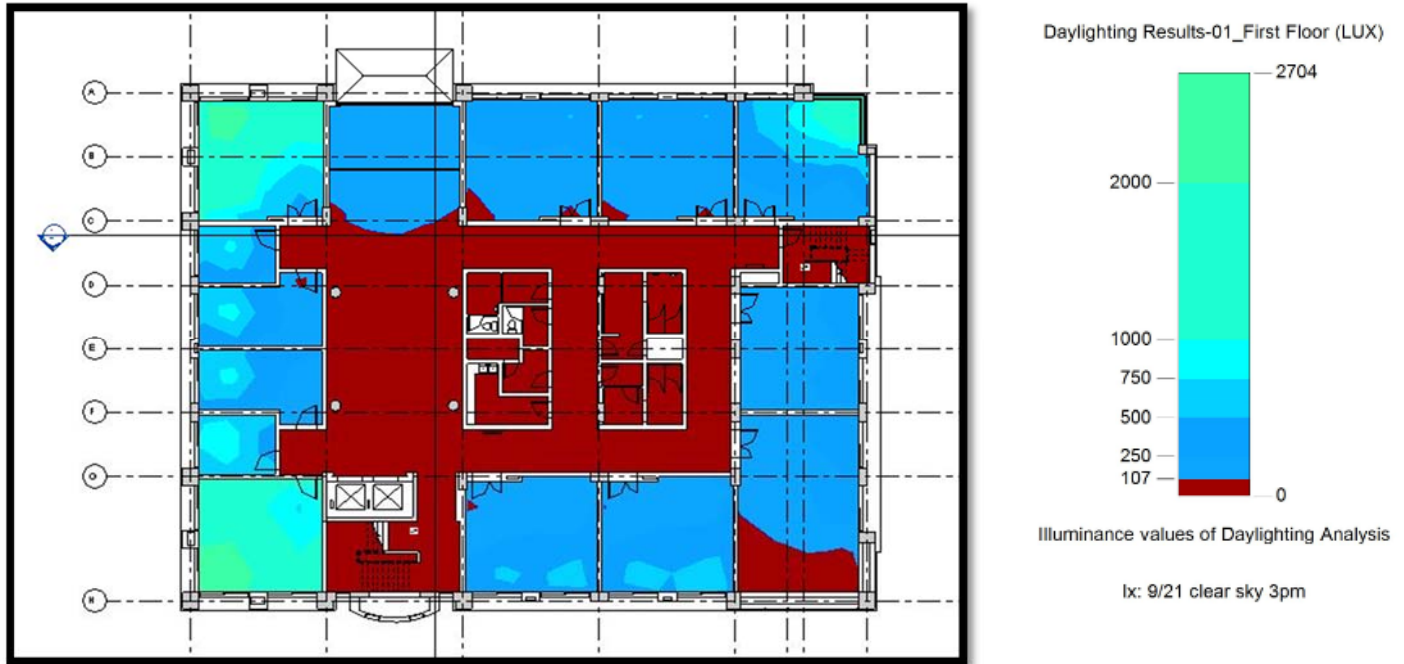


Figure (4-33) 1<sup>st</sup> floor lighting analyses

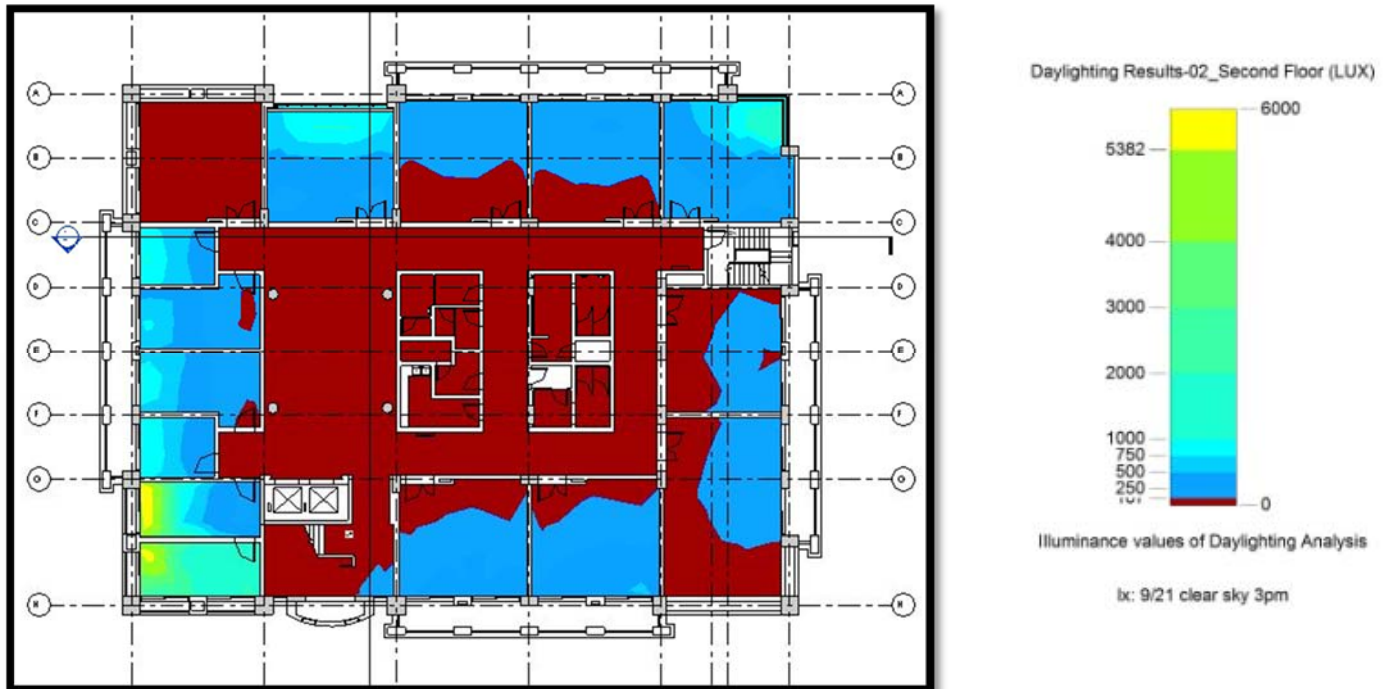


Figure (4-34) 2<sup>nd</sup> floor lighting analyses

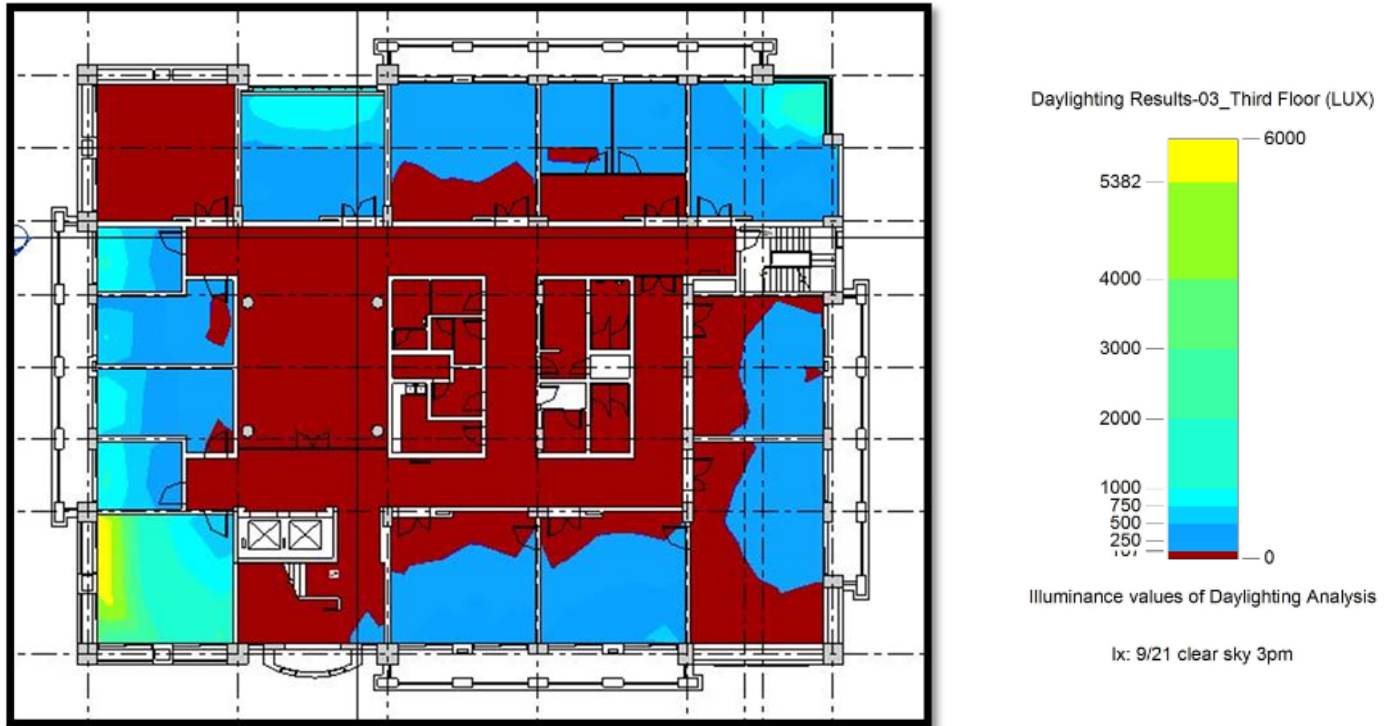


Figure (4-35) 3<sup>rd</sup> floor lighting analyses

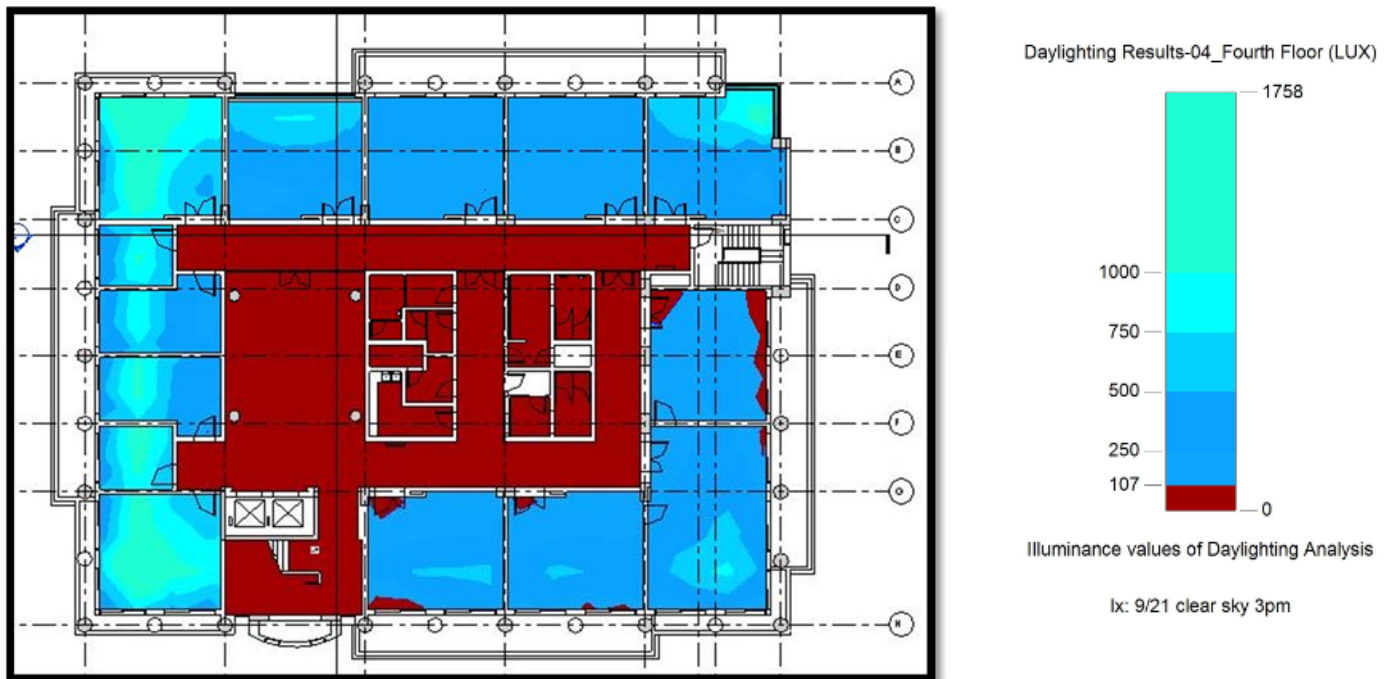


Figure (4-36) 4<sup>th</sup> floor lighting analyses

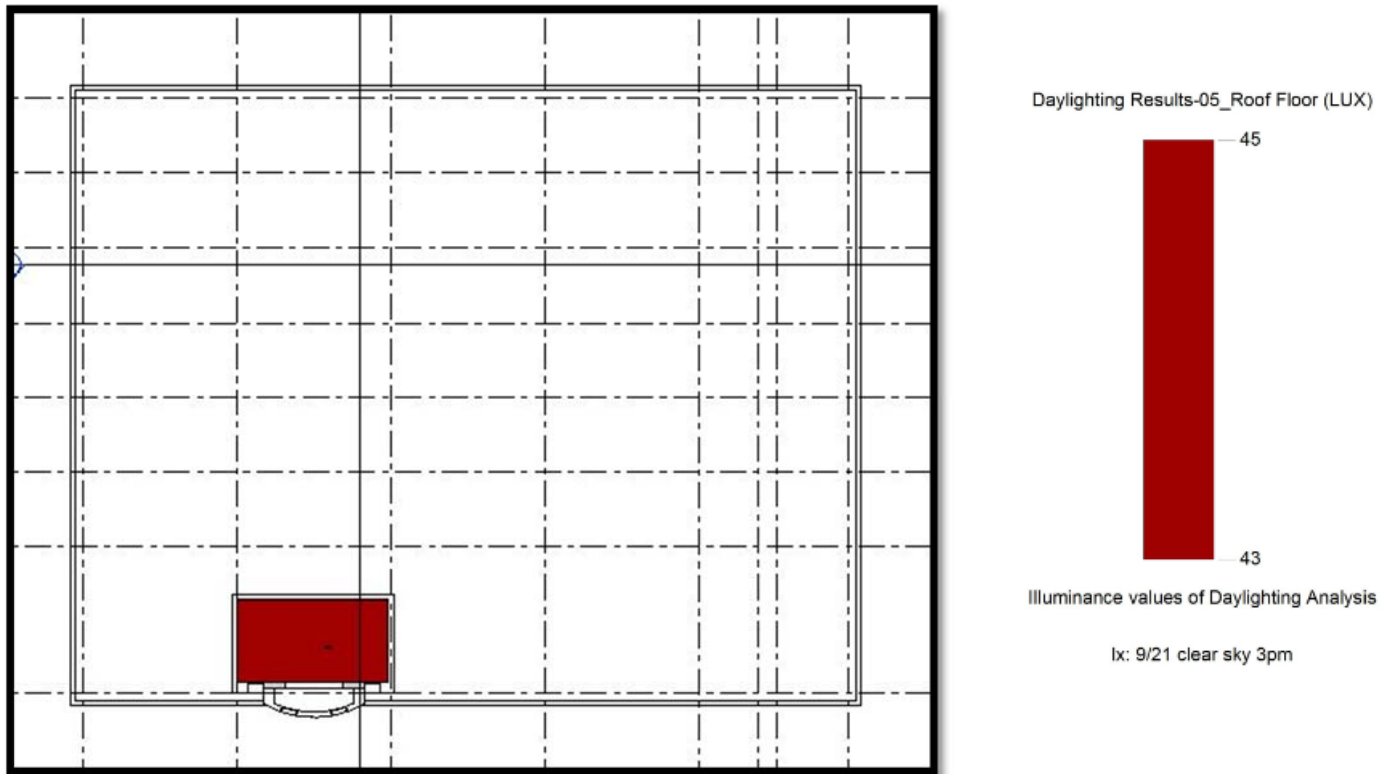


Figure (4-37) roof lighting analyses

Table (4-3): Building GS Lighting Analyses Floor Schedule

Floor	Total area(m <sup>2</sup> )	Daylight area(m <sup>2</sup> )	Threshold results											
			9am						3pm					
			Within		Above		Below		Within		Above		Below	
			%	area	%	area	%	area	%	area	%	area	%	area
Basement	1670	1670	9	149	4	59	88	1462	9	142	4	59	88	1469
Ground	936	912	49	449	2	14	49	448	47	427	2	18	51	466
First	904	900	53	479	0	0	47	420	55	492	0	0	45	407
Second	911	881	41	363	0	4	58	514	41	357	1	8	59	516
Third	911	881	41	365	0	4	58	512	40	356	1	8	59	518
Fourth	881	851	55	466	0	4	45	328	57	483	0	0	43	368
Roof	29	29	0	0	0	0	100	29	0	0	0	0	100	29