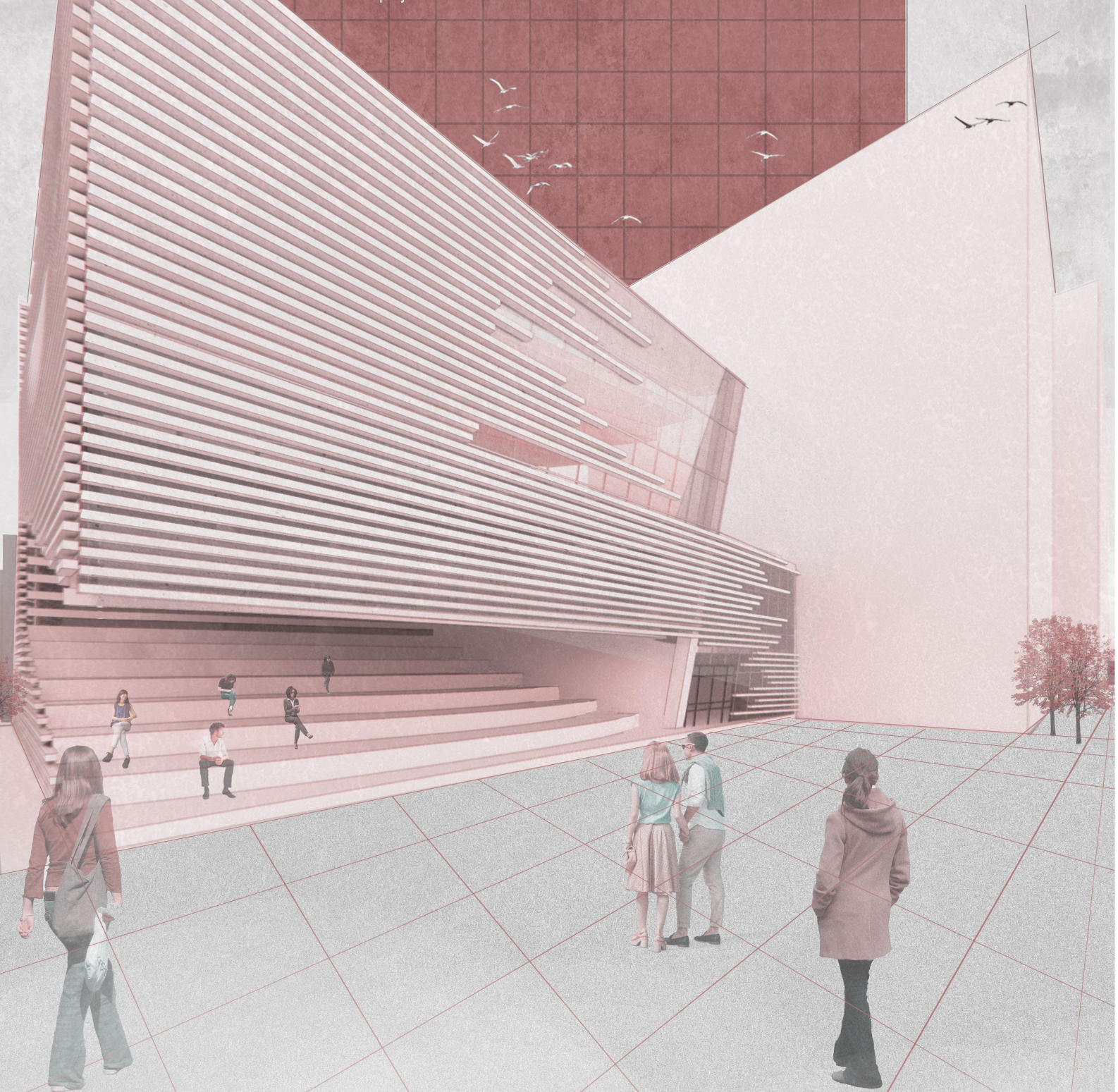


FROZEN MUSIC

Reviving the lost identity of Port-Said

The project is a public space that aims to gather and reconnect people in front of Port Said's most iconic landmarks. This project explores the influence of music to shape our sense of space inspired by the quote " **Music is liquid architecture , Architecture is frozen music** " articulating the strong relationship between music & architecture . The project aims to revive the lost foloclore of music & arts in Port-said



Form Generation





A shot from the open showroom overlooking the lighthouse used for Bambuteya shows

Project brief

WHAT? An international music centre to revive Semsemeyya and the classic instruments & it holds a workshop for recycling wood wastes that resulted from the destruction of the colonial architecture in Port-Said then recycling them and re-using them in manufacturing of the instruments .



HOW? Using voids in the form generation of the building to symbolize the time that portsaid began to lose it's identity where each void in the building is used for a social activity that fill this void .

Using also the concept of rhythm & leveling to enhance the spatial experience and the sense of music in it.

Taking inspiration from the rhythm of Semsemeyya .

WHY?

.As Port-Said was a cosmopolitan city which was rich with culture & it was known for it's own folklore of music & arts and then at some point it's identity began to fade away .

.Wood wastes found in Portsaid from old ships & destruction of colonial buildings .

STRENGTHS

Sea view

Tourist attraction

OPPORTUNITIES

Reviving old crafts

Teaching people about the importance of Port Said

S W O T

WEAKNESSES

Collapsing old buildings

People losing their roots

Lack of green areas

THREATS

Lack of job opportunities

Decreasing trade

Site selection criteria



This site is chosen as it is in front of Suez Canal that witnessed the beginning of the semsemeyya instrument in Port-Said. Also it is a suitable site for hosting international concerts.

Zoning diagram

Dancing class
Music class
Toilets
Lockers room
Open showroom
Dancing class

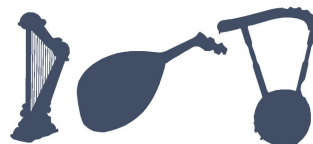
Music class
Cafeteria
Toilets
Auditorium
Administration

Library
Music foyer
Auditorium
Large instruments room
Music studio

Exhibition
Lounges area
Gifts shop
Open theater
Cafeteria

Workshop

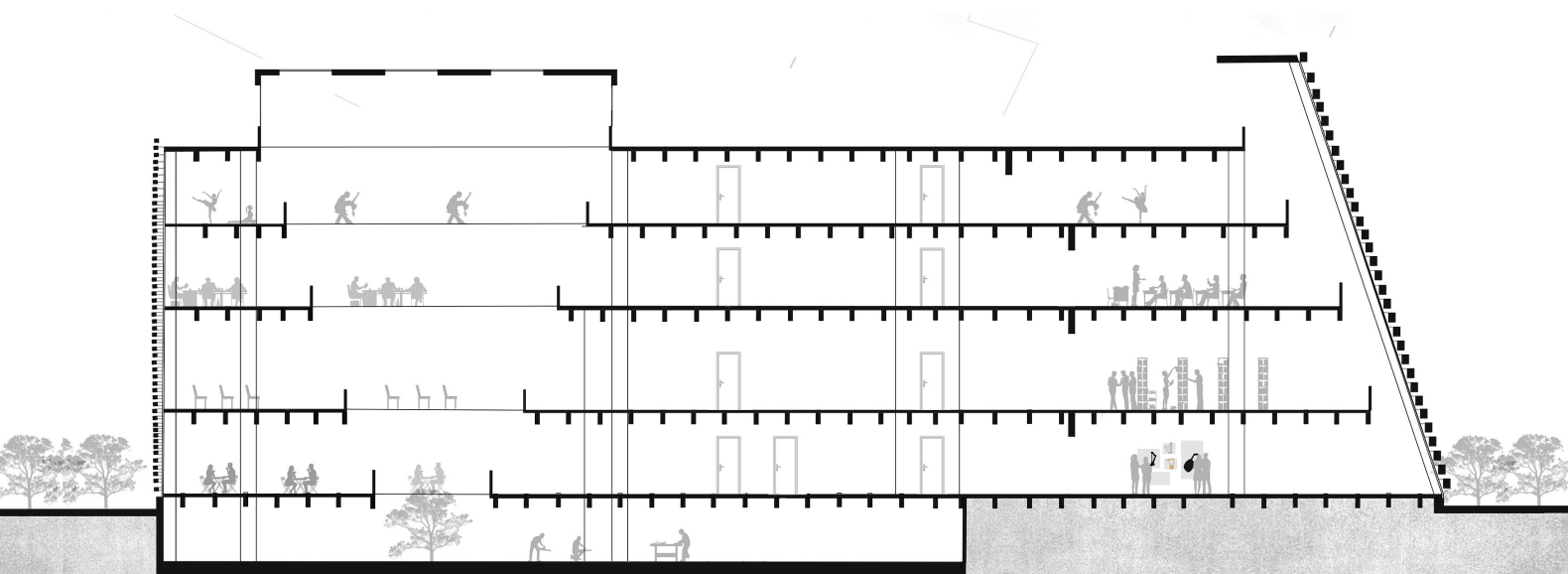
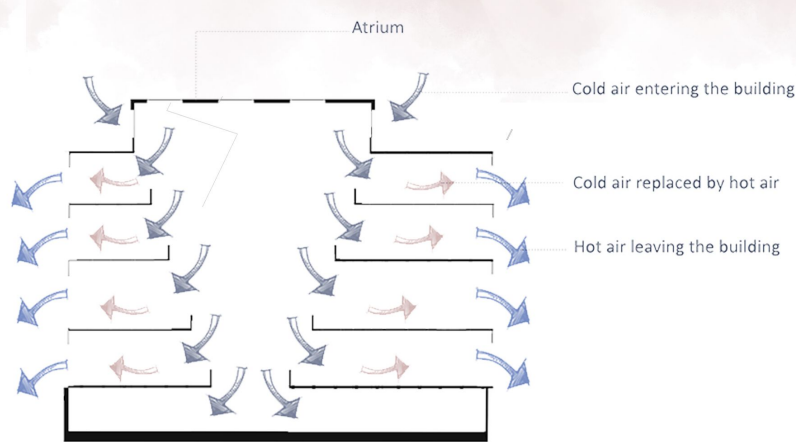
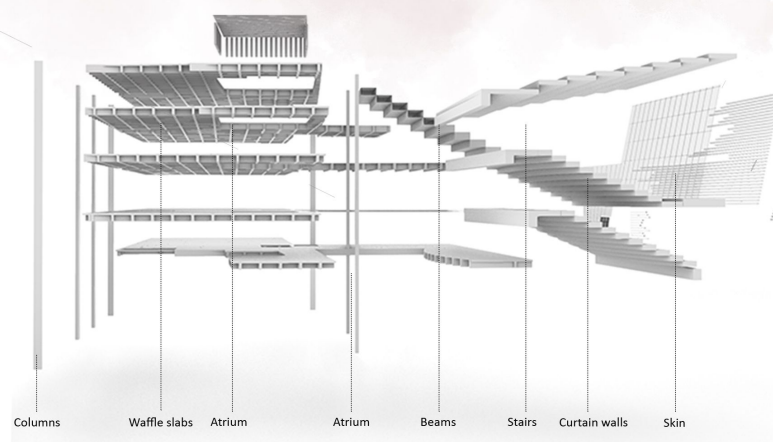
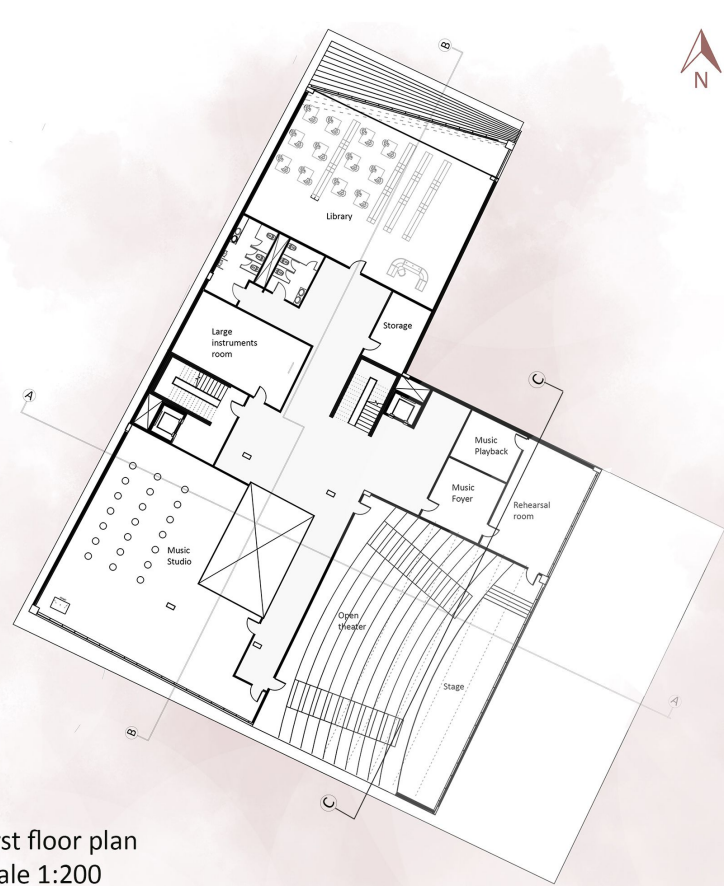
Instruments



Stringed classical instruments that are made of wood .

SDGs achieved by the project



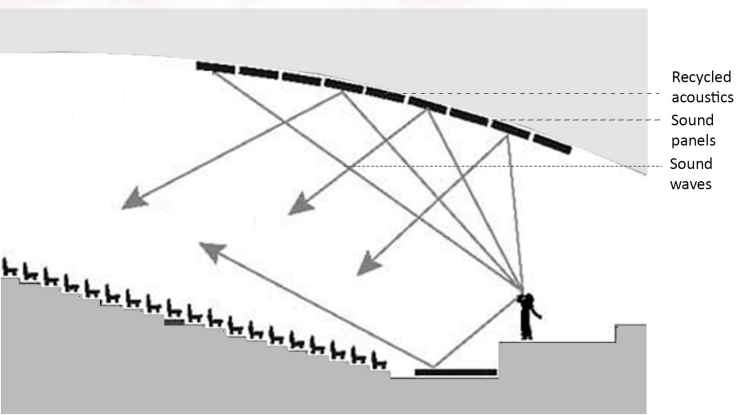




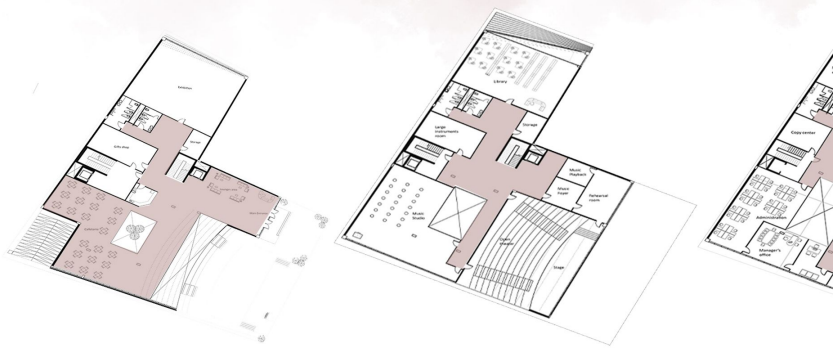
Second floor plan
Scale 1:200



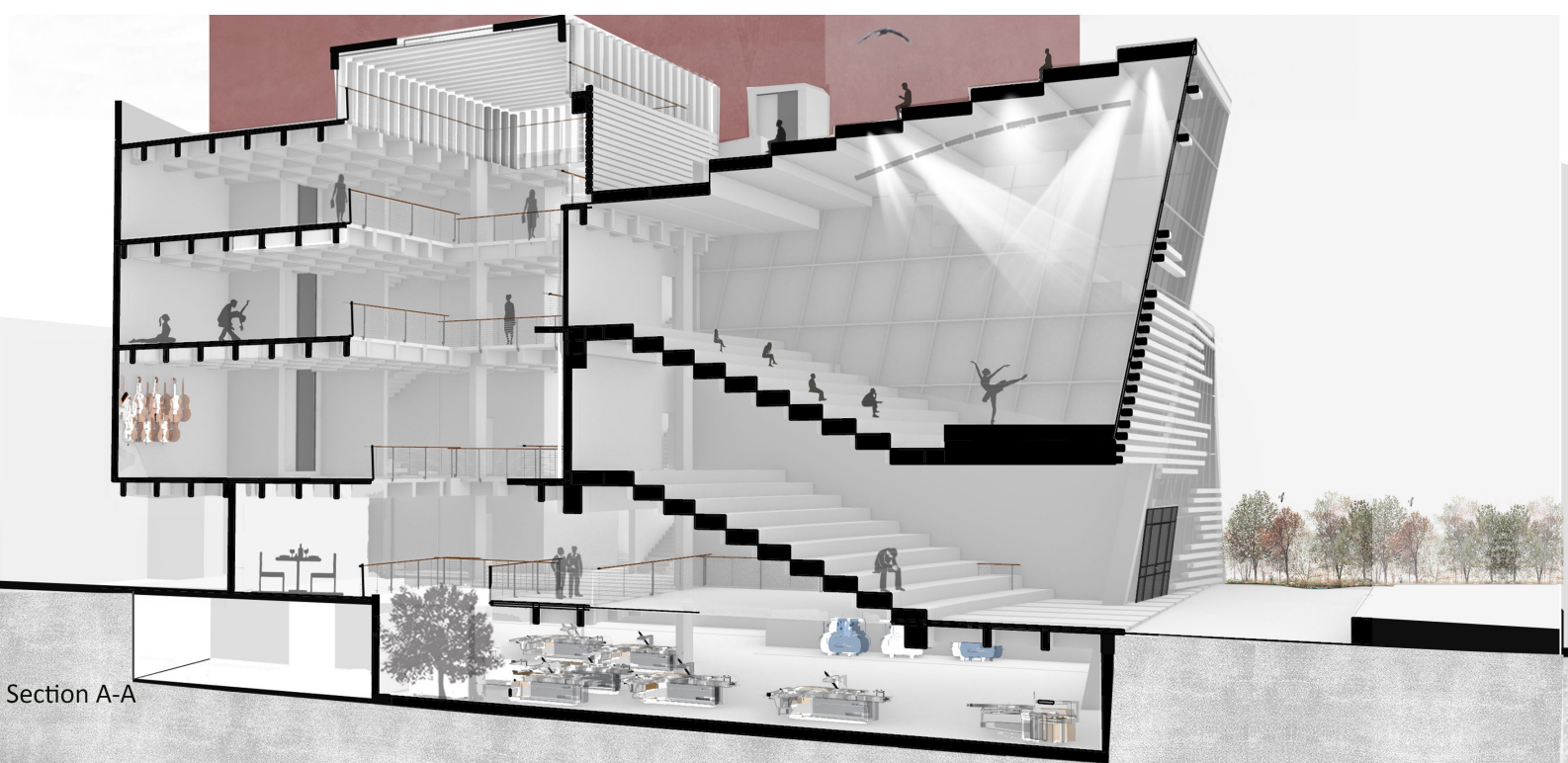
Third floor plan
Scale 1:200



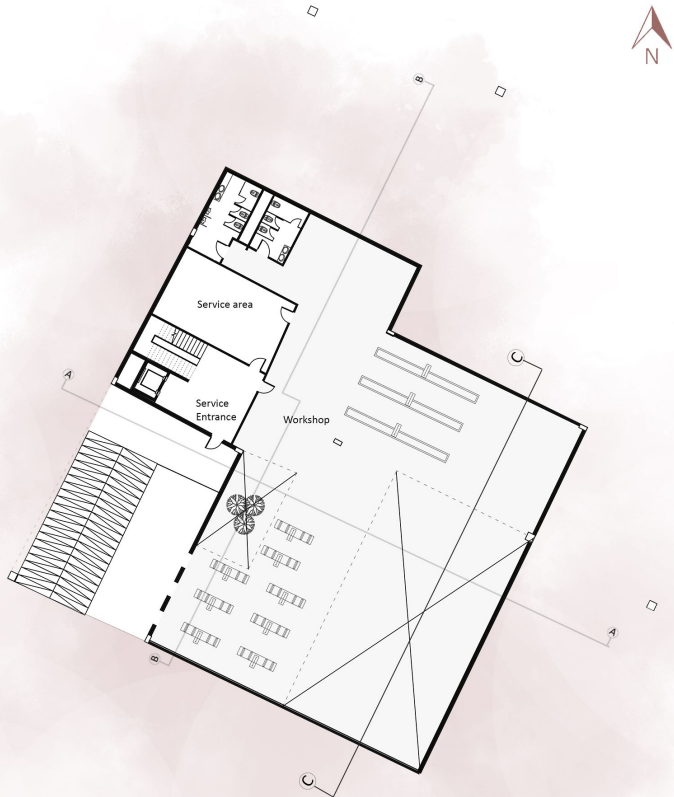
Sound diagram



Horizontal circulation diagrams



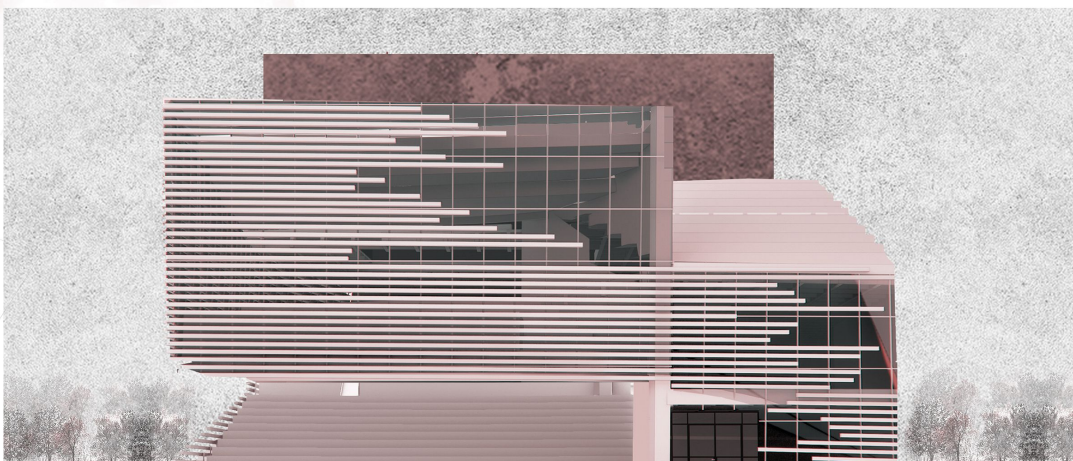
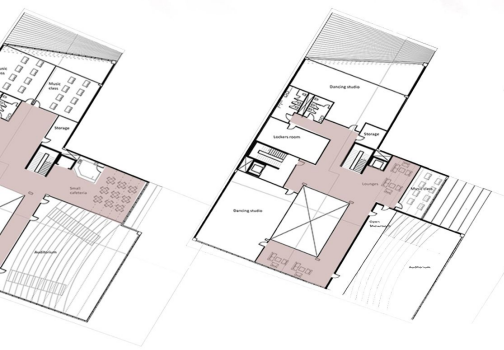
Section A-A



Basement floor plan
Scale 1:200



Layout plan
Scale 1:400



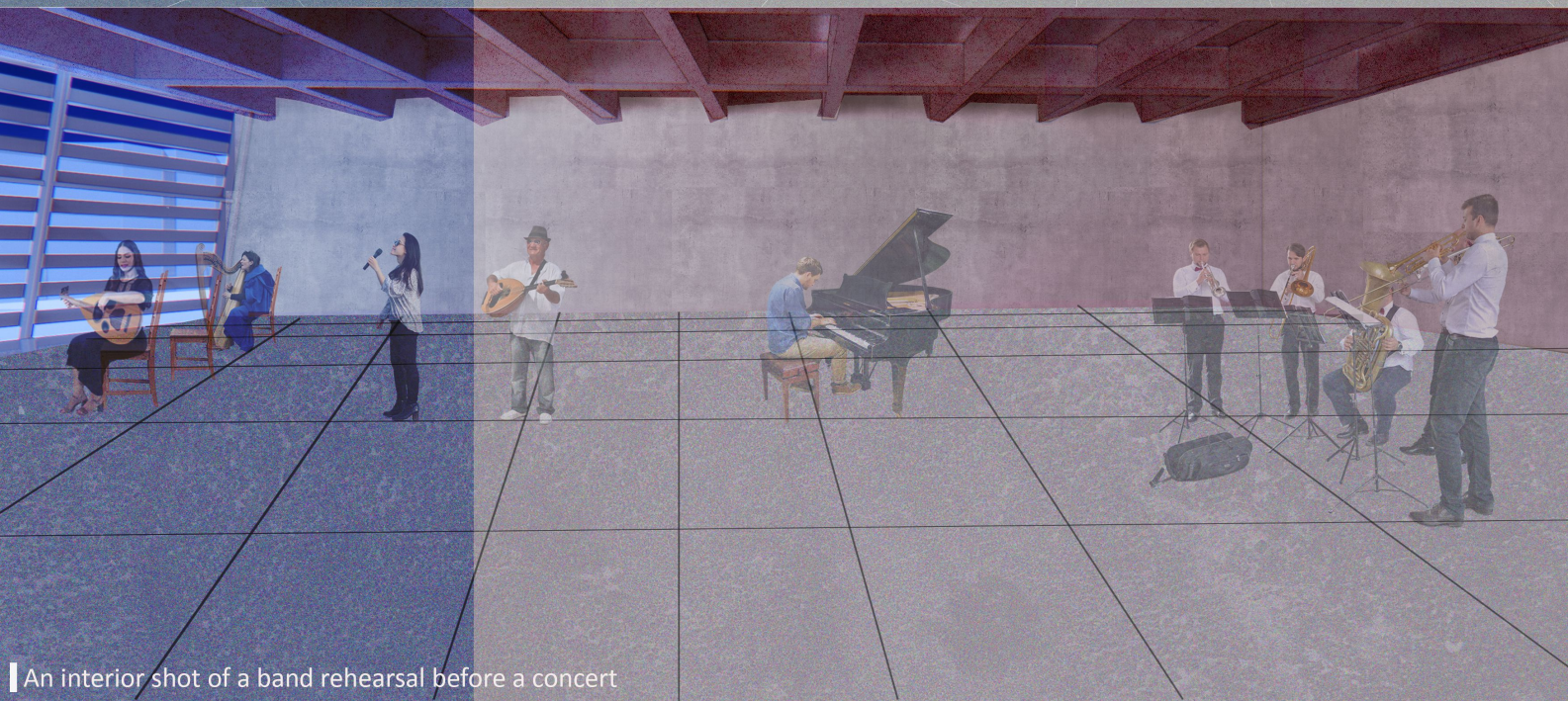
Main Elevation
Scale 1:100



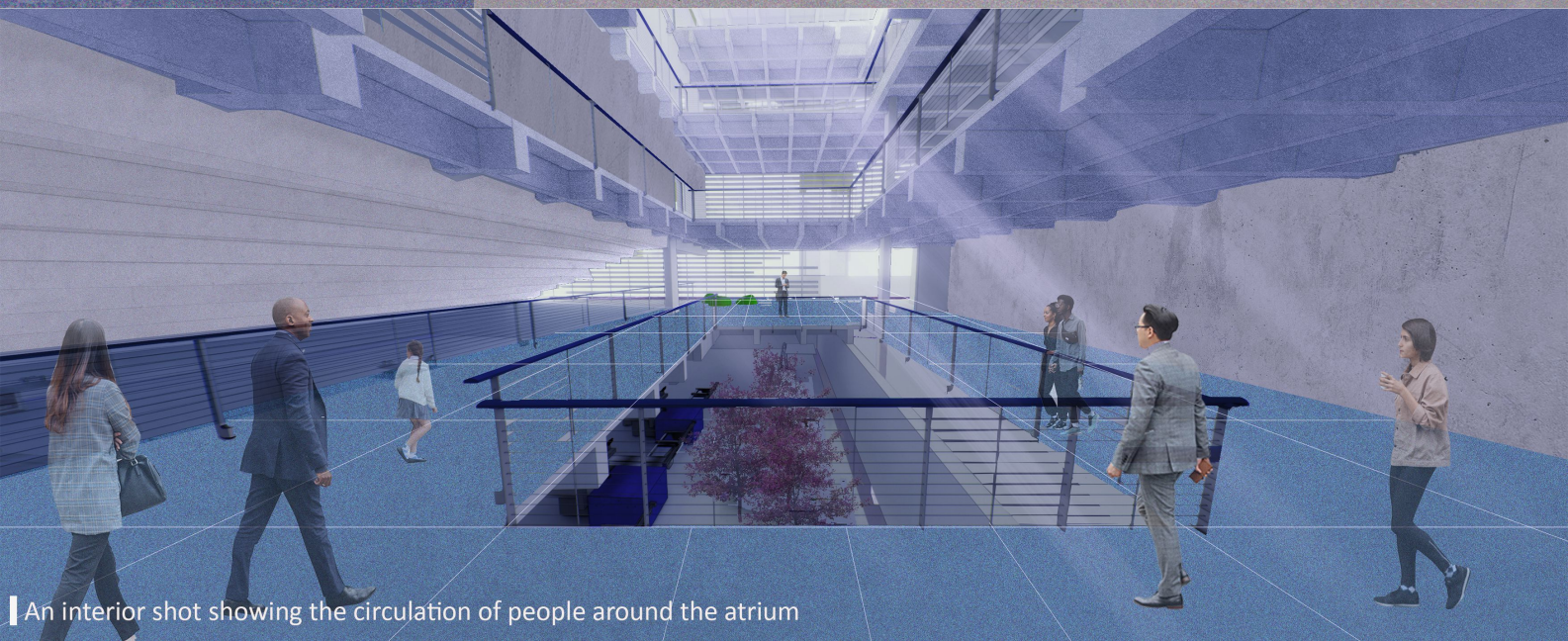
Section C-C



An interior shot from the cafeteria in the ground floor



An interior shot of a band rehearsal before a concert



An interior shot showing the circulation of people around the atrium