

PROJECT SELECTION

RECYCLED FASHION

PART ONE

- Ready to wear clothes produced from yarn made from plastic
- This production is divided into 3 parts

- Plastic → Yarn
- Yarn → Fabric
- Fabric → Clothes



Phase one sorting of plastic and then the plastic goes through a machine extruder where it is heated up and it passes through tiny holes to shred into small pieces next it goes through another machine called **carding** it aligns all the fibers in the same direction and lastly it goes into a spinning process



Once the fabric is produced it is used in creating ready to wear clothes all year round according to the latest fashion which brings the focus to Portsaid for local and international market.

PART TWO

Design School

The mission of the design school is to teach fashion to the women of port said a new way using recycled material and the design output of the school can be used in the production of clothes in the factory (part one)

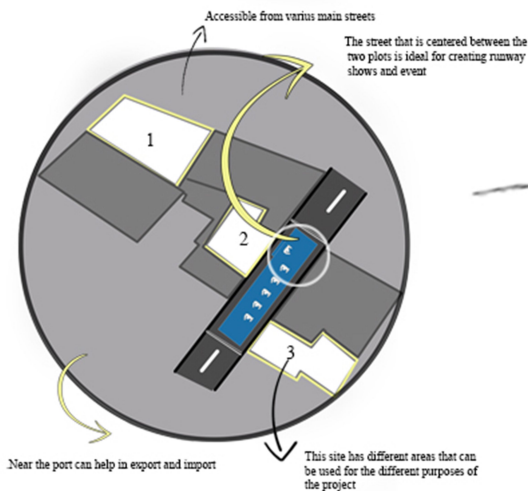
The school is also responsible for an annual fashion event. A fashion show that uses recycled materials in its raw form.

Objective

- Empowering women to learn and take part in the work force.
- Global awareness about recycling.
- Increase economic growth for portsaid.
- Market portsaid as a sustainable city.
- Attract the fashion industry and to get known internationally and increase exporting opportunities.

SITE SELECTION

AFRANG DISTRICT

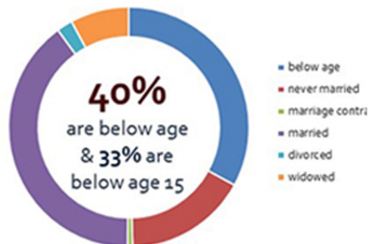
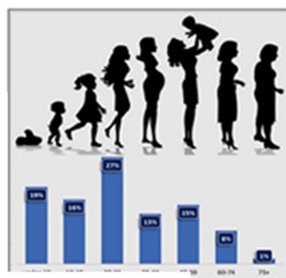
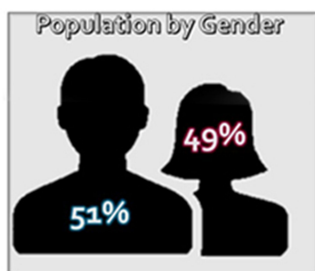


-PROJECT STATMENT

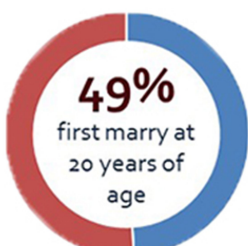
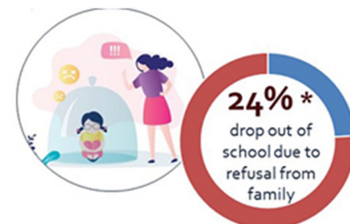
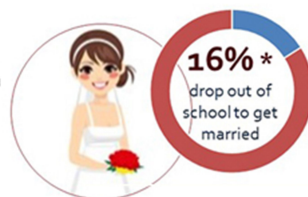
The main target of this project is to eliminate waste in portsaid by recycling and targeting a cleaner city at the same time empowering the women of portsaid by educating and encouraging them to be self reliant and providing them job opportunities.

Inspiring Innovative Sustainability Women empowerment Power

PORTSAID WOMEN



- below age
- never married
- marriage contri
- married
- divorced
- widowed



88% male 12% female

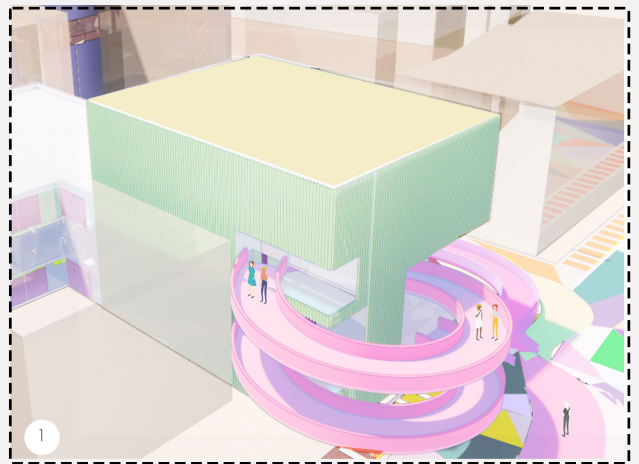
SUSTAINABLE DEVELOPMENT GOALS



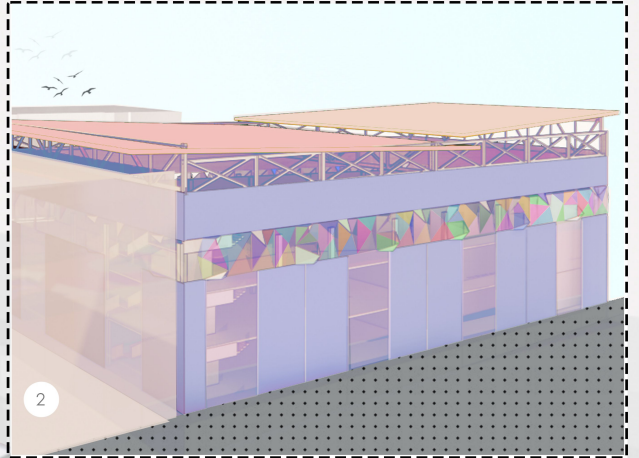
magic! couture

Recycled Fashion Design School
in Port Said

Fashion with a new twist; integrating port said long history of fashion with today's need for sustainability and recycling. Magic couture aims at empowering women to be self-sufficient while providing port said with an opportunity to rebuild its economy by producing fashion made mainly from recycled material targeting local and international markets.



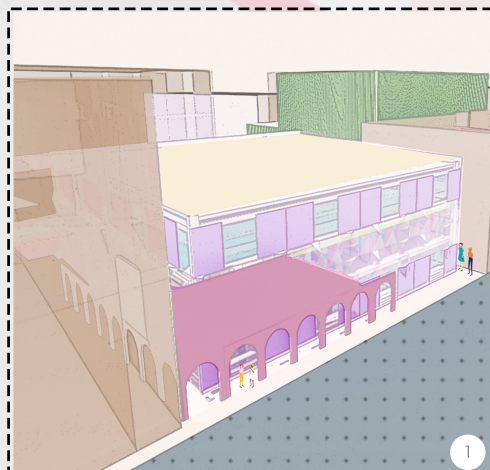
The main building hosts the school of fashion in its bright colors. The main feature is the ramp that subtracts from the building spaces creating interconnected zones. This building connects to the exhibition building through a colorful passage that is a visual extension of the ramp.



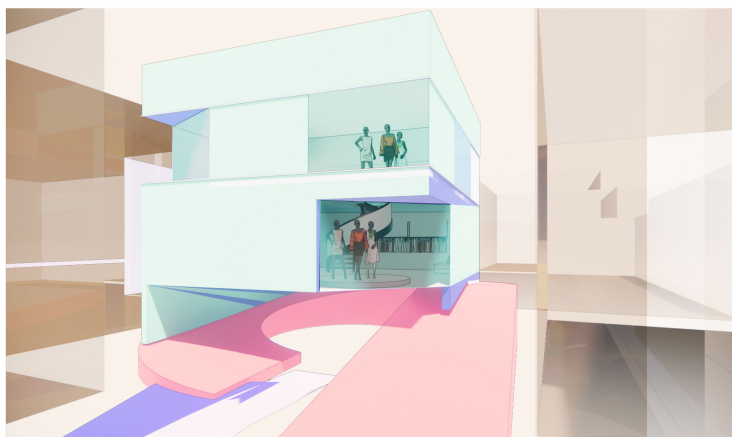
The factory is where the magic happens. The colorful passage also leads to this building, bringing together the complete picture of this project: Factory, school, exhibition and runway.



The exhibition building marks the end of the passage that is also an outdoor runway used for fashion events.

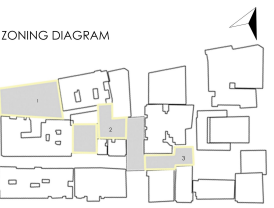


In line with the concept of recycling and sustainability, this building was redesigned around the beautiful remains of an old building using color and different materials to both preserve the old and bring on the new.

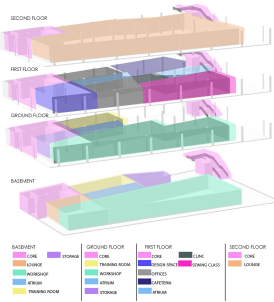




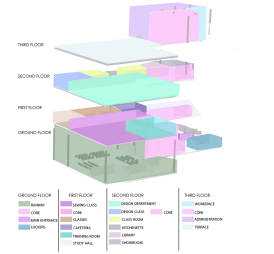
GROUND PLANS



BUILDING ONE



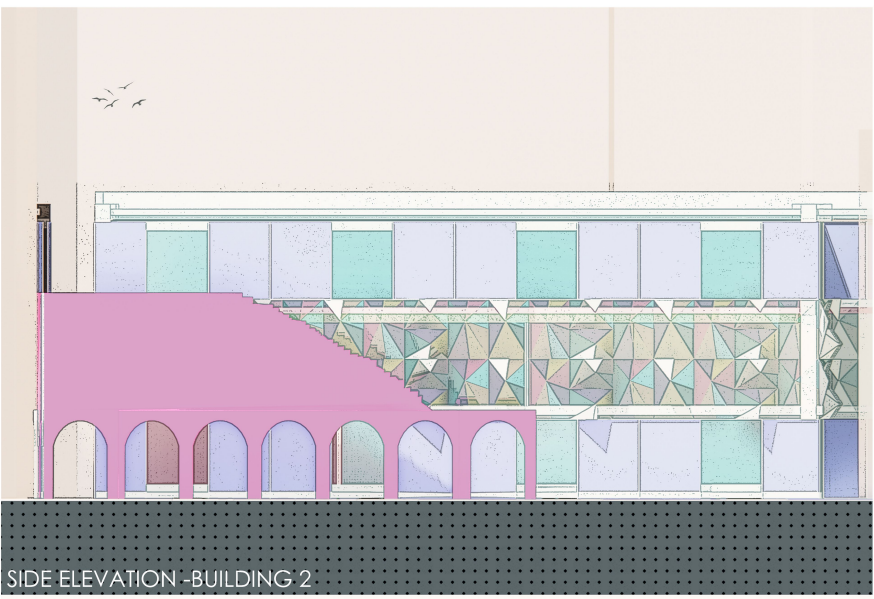
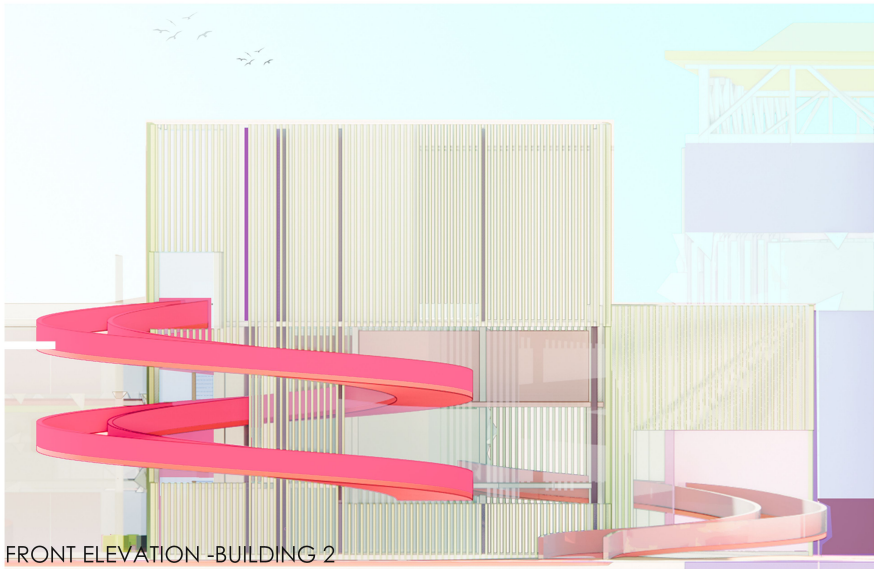
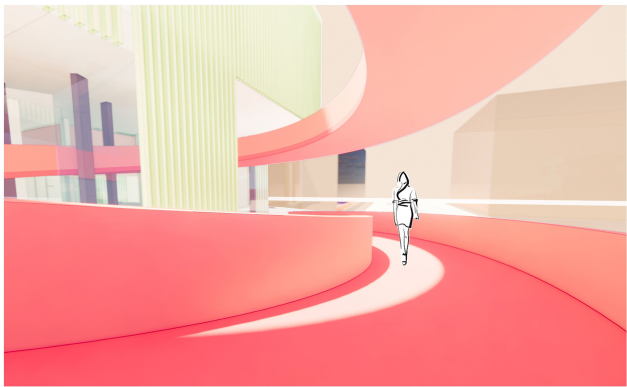
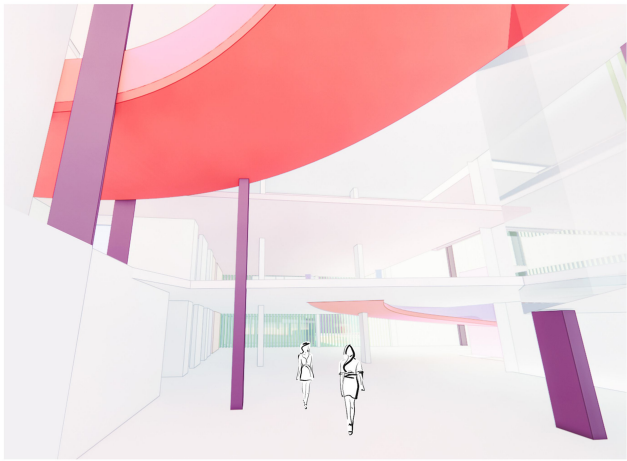
BUILDING TWO



BUILDING 3



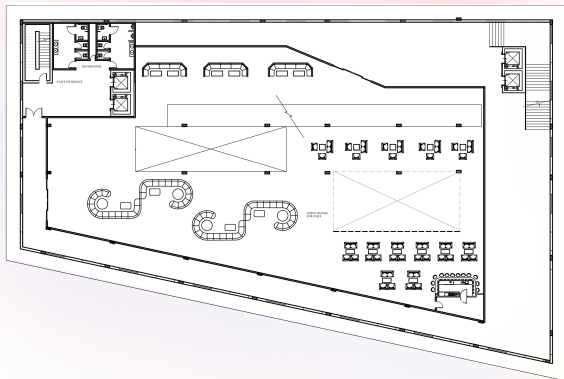
SECTION A-A



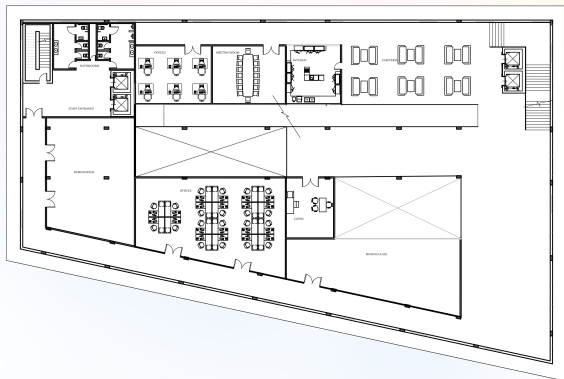
SECTION B-B

BUILDING ONE PLANS
SCALE 1:200

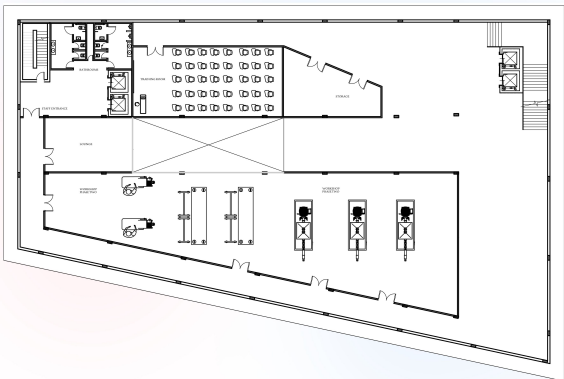
SECOND FLOOR



FIRST FLOOR

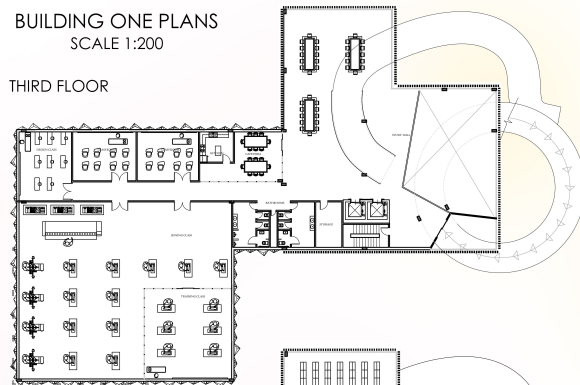


BASEMENT FLOOR

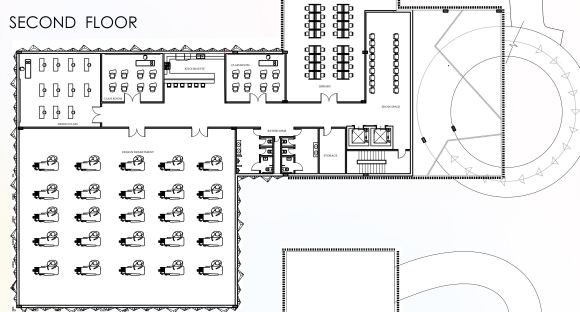


BUILDING ONE PLANS
SCALE 1:200

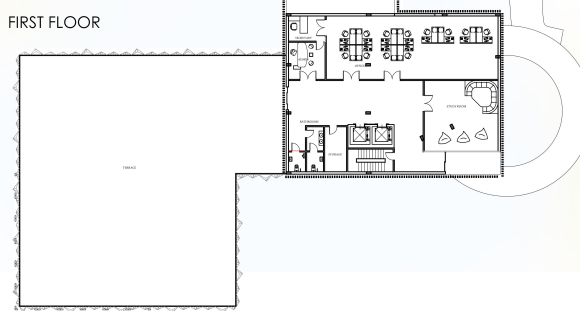
THIRD FLOOR



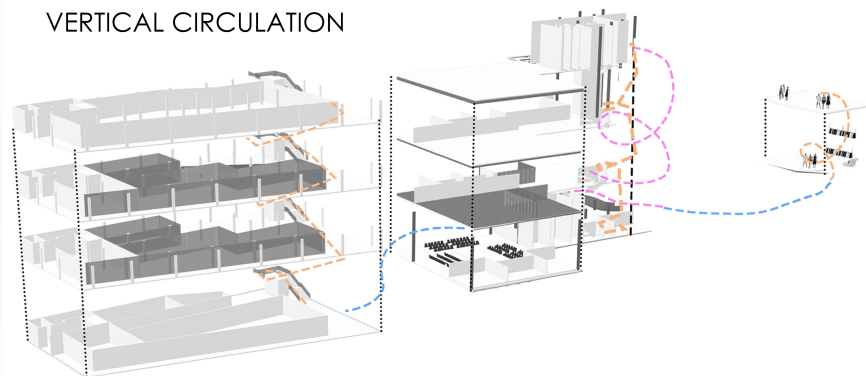
SECOND FLOOR



FIRST FLOOR



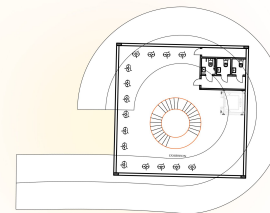
VERTICAL CIRCULATION



- — — — — PATHWAY CIRCULATION
- — — — — RAMP CIRCULATION
- — — — — STAIRS CIRCULATION

BUILDING ONE PLANS
SCALE 1:200

SECOND FLOOR



FIRST FLOOR

